

Marbridge LIFE



Celebrating 70 Years

See Marbridge's Growth Since 1953

(pg . 6)

Saddle Up!

Equine Arena Now a Reality

(pg . 10)

Marbridge Foundation

P.O. Box 2250
Manchaca, TX 78652
512.282.1144
Marbridge.org
info@marbridge.org

Board of Trustees

Mike Moulton - Chair
J. Mitchell Bell
Liam Fry, MD
Barbara Gideon, Ph.D.
Thomas Leyden
Stephen Matthews
Scott McAvoy
Julia Nickerson
Tom O'Brien
C. David Perry
John Head - Honorary

Administration

Scott McAvoy
President/CEO

James Stacey
President Emeritus

Chris Lynch
Vice President of Finance

Becca McPherson
Vice President of Development

Marcus Mercer
Vice President of Operations

Megan Salyer
Vice President of Human Resources

Jana Kay Green
Director of Training & Education

Will Hoermann
Director of Admissions

Tracy Hogan
Director of The Village

Jenna Hudson
Director of The Ranch

Duncan Murray
Villa Administrator

Michael O'Shieles
Director of Facilities

Michelle Powell
Director of Accounting

Bob Worden
Director of Communications and Development



A Letter from the President

Seventy years ago on June 1, 1953, Ed and Marge Bridges incorporated Marbridge as a unique and innovative community to provide a residential training and educational experience for their son, Jim, who was born with Intellectual and Developmental Disabilities (IDD) and others like him. At a time when the experts were recommending families send their loved ones with IDD off to institutions to receive custodial care for life, the Bridges sought a better way for their son, going against the myths of the day that people with IDD couldn't learn, experience, and achieve.

Marbridge changed the way folks with IDD lived, worked, and played by offering many opportunities to be as independent as their unique abilities allowed.

As Marbridge celebrates the past 70 years of providing compassionate and innovative care, significantly upgrading and improving our campus and hiring the best, most qualified employees, we look towards becoming the best of class in the entire country. A place where residents and their families want to come, where people prefer to work, and industry experts that peers seek to learn from.

This issue of LIFE Magazine focuses on the core value of "Achieve", just like so many residents and team members have done since 1953. The stories you'll read highlight how amazing the residents and team members at Marbridge are, and how much we've grown since 1953.

Humbly,

Scott McAvoy
President/CEO

Resident Spotlight

Meet Reagan

In her short time at Marbridge, Reagan, a Villa resident, has made a big impact. She is fast to make friends, friendly to staff, and participates in numerous activities.

Reagan is also a beacon of happiness. No matter what mood you're in, Reagan finds a way to make it better through her kindness and smile.

"She's always upbeat," said Barbara Prince, a Licensed Vocational Nurse at The Villa. "She's friends with everyone, smiles at everyone, and always says hello to anyone she sees."

Reagan's upbeat and positive personality have spread through The Villa and through her friends.

"I love my friends. They're all really nice," said Reagan. "I love going to movie matinees with them and other activities."

When Reagan isn't spending time with her friends or participating in activities, she can be found playing her Nintendo 3DS. Her favorite game to play and talk about is Pokemon and she loves catching them all.



Learn more about The Villa when you visit:
Marbridge.org/villa

In this Issue...

Bits & Pieces

- 3 Resident Spotlight - Meet Reagan
- 4 A Camping We Will Go
- 4 Fresh Faces
- 5 Support Benevolent Care

Features

- 6 Seventy Years & Counting
- 8 Painting for Marbridge

Our Community

- 9 Volunteers Shine
- 10 Saddle Up!
- 12 Leading the Way
- 13 2022 Financial Position
- 14 Premier Employees
- 16 Planned Giving

A Camping We Will Go

Annual Inks Lake Camping Trip was Hot but Fun!

Residents from The Ranch and Village hiked, fished, and perfected their s'mores cooking techniques during the annual Inks Lake camping trip this May. It's an annual tradition that residents look forward to all year long and this year's trip was the best ever.

This year's trip was particularly special as this was the first trip after being awarded a 'Texas Parks and Wildlife' grant, which helped fund the annual camping trip this year.

"The residents love being outside in nature, taking hikes, fishing, and volunteering for park clean-up. One of their favorite activities of the year is the Inks Lake Camping Trip," said Jana Kay Green, Director of Training & Education. "With the additional funding, our goal is to add an additional camping trip in the fall."

Thanks to the grant from Texas Parks and Wildlife, Marbridge's cost for the next three camping trips is covered. This also allows residents and T&E team members to add a fall camping trip, which means more residents can participate in the fun.



Top: The camping group poses for a photo by the lake's edge.
Bottom: Myles, a Ranch resident, proudly displays his catch during some evening fishing.

See photos from the Annual Inks Lake Camping Trip at:
[Marbridge.org/photo](https://marbridge.org/photo)

Fresh Faces

Meet a few of the new staff members from across Marbridge's campus.

You can join the Marbridge team and help residents across campus achieve a whole new life.

Learn how you can join the Marbridge team at:
[Marbridge.org/careers](https://marbridge.org/careers)



Erica Sandlin - LVN - The Villa
"I love the perspectives resident's show me. They're perpetually joyous and it rubs off on you."

Support **BENEVOLENT CARE**

Marbridge serves a unique population. Unique in the sense that we care for adults with a variety of cognitive and developmental disabilities, but also unique in the tenure of the residents. Over a dozen residents on campus have lived and thrived at Marbridge for over 50 years. Those residents have seen a vast change to campus since it was founded in 1953 and have stories they love sharing.

If a resident has outlived their financial and family support, Marbridge's Benevolent Care can step in to ensure that resident will remain safe and thriving. Benevolent Care allows those who have called Marbridge home for many years to continue aging-in-place without any disruption in care, activities, or daily life.

A resident who receives Benevolent Care will never have to leave Marbridge due to financial hardship. They're ensured to continue to learn, experience, and achieve without concern over their costs being covered, thanks to the generosity of our amazing supporters. With that support, both in our mission and through financial backing, the residents will thrive for years to come.



Show Your Support at: Marbridge.org/donate



Kay Johnson - Cook - The Village

"My favorite thing about the residents is the connections you make and build with them. It's special. It's comforting coming to a place where people care about you."



Therese Fields - Direct Care - The Ranch

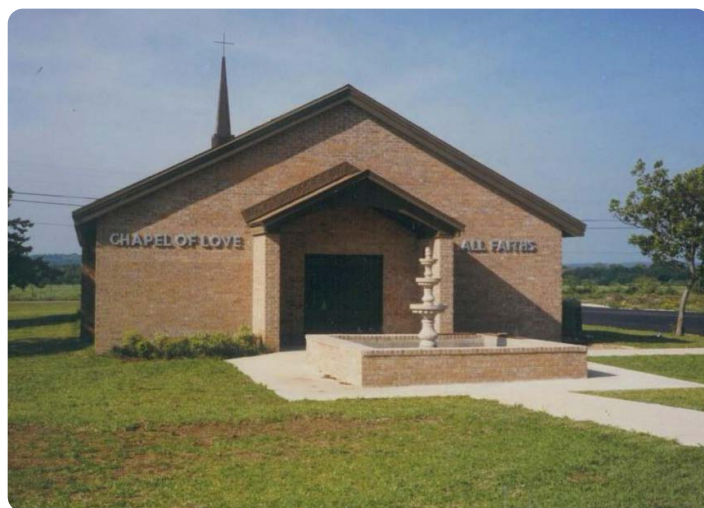
"It's a spiritual fulfillment getting to work here and with the residents. It's not just about helping them, but also about how they have helped me."

Seventy Years & Counting

How Campus has Grown Through the Years

In 1953, Ed and Marge Bridges set out to give their son Jim a better life. A life of meaning, purpose, and fulfillment with opportunities to learn, experience, and achieve was the vision of the Bridges and the foundation that Marbridge was built on. Today, 70 years later, Marbridge continues building on that innovation created seven decades ago and grow alongside the residents who call campus home.

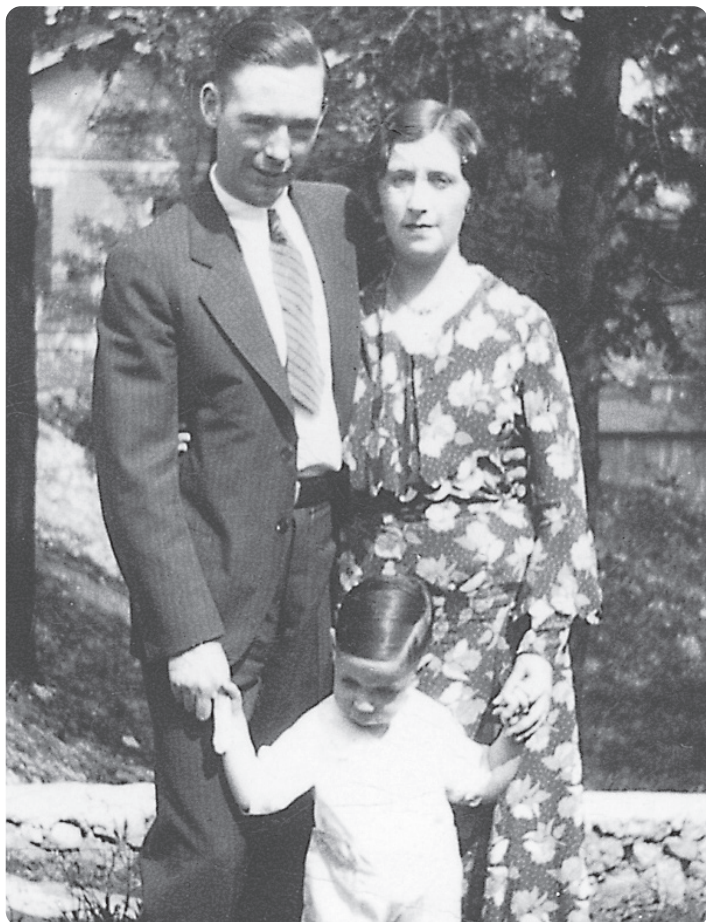
We're celebrating 70 years of excellence in helping individuals with intellectual and developmental disabilities gain a higher level of independence and success in their lives. We've seen countless ways that residents, team members, and volunteers amaze us in their achievements. Through both good and tough situations, their fighting spirit has been embedded in our culture.



Top: Residents work in the chicken coops to collect eggs in the early 1960s when Marbridge was a working ranch.

Above: The completion of Marbridge's Chapel in the 1980s.

Below: Several greenhouses are constructed, leading to Marbridge's nursery where residents were employed in the 1970s to early 2000s.



Above: Ed and Marge Bridges, with son Jim, in the 1930s.



“We’ve grown from a single resident assisted by a farm couple on a small ranch with a single building, to a 200-acre residential Training & Education campus with three separate care communities predicated on level of need/independence for 275 residents,” said Scott McAvoy, President/CEO. “As we continue growing, we want to be a thought leader in the intellectual and developmental disability care community. Our long-term plan includes upgrading, replacing, and adding facilities such as more residential settings, a replacement to our entire Villa licensed skilled nursing facility, a new comprehensive education building, and swimming pool to enhance our living and training programs while upgrading staff training, partnering, and collaborating with community IDD organizations, post-secondary providers, and experts in our field.”

While campus has changed exponentially since its opening, the mission has remained strong. Travel through time with us and see how campus has changed from its inception to today. Be on the lookout in our fall edition for a bigger celebration of 70 years at Marbridge, but for now, enjoy Marbridge through the years.



Above: Alice, a Village resident, poses for a fun photo at Goodwill, her place of employment in the early 2000s.



Top: Richard, a Villa resident, poses for a photo in Marbridge’s old horse stables.

Middle: Residents and team members celebrate the opening of Victory Hall and Mike Parsons Wellness Center in 2015.

Bottom: Denton, a summer camper, rides in the Creed Ford III Therapeutic Riding Ranch with Molly Banner, instructor, and Caleb Ballinger, an equine volunteer.

Support Marbridge for years to come by becoming a Miracle Society member at:
Marbridge.org/miracle

Beautiful Artistic Gift Benefiting Marbridge

Sidney Bonnet blesses the Marbridge campus through her picturesque paintings

As Sidney Aldridge Bonnet and her late husband Jim, both physicians, were preparing for the arrival of their twin boys, they learned John had an in-utero stroke. He was born with cerebral palsy and developmental disabilities, and his family rallied around him. They later found Marbridge, via an ‘MHMR Fair’ for parents of children with disabilities in the DFW area.

“Will Hoermann gave us a video about Marbridge. We watched it with John that night and we were all so impressed by it. John, on his own, started watching that video every single day, and then he told us that he wanted to ‘go to college’ at Marbridge,” reflected Sidney. “We soon realized as John first attended summer camps for a few years, that it was an unbelievably special place. It had so many possible activities for John . . . We felt like we had absolutely found heaven on earth.”

Sidney’s hobby of painting in young adulthood was placed aside as she became a physician and raised her three boys. Over the last six years, Sidney has reached astonishing heights in her new professional painting journey, as she and John’s caring and supportive stepfather use travel as her inspiration.

“I have always been obsessed with the play of light across landscapes and buildings, and I find it so satisfying to recreate that on canvas,” commented Sidney. “When John is home, he and I paint together sometimes! He loves my paintings, and he has one at Marbridge. He says he wants several more!”

As Sidney’s painting moved from a hobby to a second career, she has felt moved to benefit the entire Marbridge campus. Her talented work is now commissioned with 100% of her payment going directly to the campus. She welcomes more commissions to even further support Marbridge. Several paintings for purchase are featured in the care community administration buildings throughout campus.

“Sidney is using her astounding talents to monetarily support our campus while introducing our mission to many other families through her gorgeous work,” commented Becca McPherson, Vice President of Development. “As families look at the paintings hanging in their home, they will remember our mission and hopefully continue introducing it to others who might also need our services. This gift is a blessing in many ways to many people.”



Above: Sidney proudly displays a commissioned painting done as a southwestern scene.

Below: Sidney (standing right) shows off her finished artwork with buyers and friends, Jeanne and Bill Ellermeyer. 100% of the proceeds from Sidney’s paintings is donated to Marbridge.



Interested in commissioning your own painting while benefiting Marbridge?



Contact Sidney Bonnet at sidneybonnet@gmail.com or scan the QR Code to access her art through Facebook.

Volunteers Shine

Marbridge Hosts Appreciation Dinner for Volunteers

On Thursday, April 27, Marbridge hosted the annual Volunteer Appreciation Dinner at Pecan Springs Ranch. The evening was a spotlight for the incredible volunteers who give their time, service, empathy, and compassion to the Marbridge mission, residents, and staff.

Throughout the evening, Haley Koop Poorman, Volunteer Coordinator, along with various staff from across campus, shined the light on some spectacular volunteers who went above and beyond in 2022. Awards given throughout the night included the 'Bridges Award', 'Commitment Award', 'Volunteer Group of the Year', and 'Volunteer of the Year'.



Above: Cheryl Alexander (center) shows off her 'Volunteer of the Year' award along side (left to right) Marcus Mercer, VP of Operations; Haley Koop Poorman, Volunteer Coordinator; Scott McAvoy, President/CEO; Shonda Corn, Equine Coordinator; Becca McPherson, VP of Development; Megan Salyer, VP of Human Resources; and Chris Lynch, VP of Finance.

Bridges Award

Yogi and Judy Behr
Kelly Stubblefield
Maria Lecomte
Connie and Jerry Nicholson

Commitment Award

Elizabeth Jamison
Stephen Shelburne

Volunteer Group of the Year

Giving Tree Elves

Volunteer of the Year

Cheryl Alexander



Above: Jamila Coker (right), Instructor, presents Maria Lecomte with her 'Bridges Award' at the 2023 Volunteer Appreciation Dinner.

"I consider myself lucky to have found Marbridge. I experience so much happiness working with the horses and guiding residents to learn new skills," said Cheryl Alexander, 'Volunteer of the Year' winner. "They teach me to look at a task in many different ways. I am blessed. Volunteering at Marbridge is my happy place."

Thank you to all of the amazing volunteers who unabashedly care for the safety, well-being, and happiness of all on our campus. A special thank you to Frost Bank, Gourmet Gals, Pecan Springs Ranch, H-E-B, Marbridge Parents and Family Association, and McCoy's for supporting the event and making it a success.

Proudly sponsored by:



Pecan Springs
Ranch

Learn how you can get involved in
volunteering at :

Marbridge.org/volunteer



Above: Creed Ford IV (center) cuts the ribbon along with Marbridge residents, staff, and the Ford Family for the Creed Ford III Therapeutic Riding Ranch.

Saddle Up!

Equine Arena is now a Reality

The day campus has waited so long for finally arrived, and it was magical. On Tuesday, May 2, Marbridge, the Ford family, our amazing supporters, families, and residents cut the ribbon on the Creed Ford III Therapeutic Riding Ranch. It was a day that many will reflect on for years as well as an honorable legacy for a man who greatly valued philanthropy and supporting some of our community's most vulnerable, Creed Ford III.

Close to 200 residents, staff, volunteers, and supporters gathered to see the opening of the new state of the art arena. After heartfelt speeches from Marbridge Senior Leadership; Shonda Corn, Eqine Coordinator; and Creed Ford IV, along with the Ford family and residents, cut the ribbon and welcomed everyone to see the new indoor arena.

"I'm excited for the opportunities that it provides for our residents and the elevated level of safety it provides both residents, horses, and staff," said Corn. "The new Riding Ranch will expand our program to all areas of campus, offer us the ability to provide more advanced riding classes, and the ability to be able to open events to the public and greater community."

The 43,000 sq. ft. building allows residents from all communities to participate in equine therapy. It also allows for year-round training and protection from the elements including rain, extreme heat, and bitter cold.

“I like the new arena a lot,” said Abby, a Village resident and rider on the Marbridge Equestrian team. “It’s really cool. I like riding in the arena and the horses really seem to like it.”

The CIII Arena was the vision of Creed Ford III, a longtime Marbridge supporter and advocate for the benefits of equine therapy. His vision for equine therapy and providing for the Marbridge residents helped bring the dream of the new arena to reality.

“Creed Ford III had a vision of providing our residents a quality facility they could learn and ride in,” said Becca McPherson, Vice President of Development. “It’s truly our pleasure to continue his legacy and walk alongside his family and our residents as they make a big impact through shows and equine therapy.”

Thank you to everyone who helped celebrate the ribbon cutting ceremony and supported the completion of the CIII Arena. A special thank you to the C3 Legacy Foundation, Rudy’s Country Store & BBQ, Tammalicious Cookies, Balloons ‘N’ Smiles, and The TackHack for supporting the event.

You can get involved with the new Creed III Arena in various ways. Items are still in need including food storage containers, tack equipment, horse blankets, helmets, bedding, and more. You can also assist in equine therapy through volunteering with several opportunities available.

If you’re interested in volunteering with equine therapy contact Haley Koop Poorman, Volunteer Coordinator at hkoop@marbridge.org or visit Marbridge.org/volunteer and fill out the volunteering form.



Top Right: Creed Ford IV celebrates the ribbon cutting with Jack, a Village resident and rider on the Equestrian Team.

Middle Right: The Ford Family poses for a photo in the Creed Ford III Therapeutic Riding Ranch arena.

Bottom Right: (Left to right) Brook and Danny, Village residents, and Daniel, a Ranch resident, pose for a photo with Smokey in his stable.

Learn more about or make a donation to support the Creed Ford III Therapeutic Riding Ranch at Marbridge when you visit:

Marbridge.org/equine

Leading the Way

The Future of Marbridge has a New Look

This has been a year of celebration at Marbridge. Not only are we celebrating our 70th anniversary, but we're also celebrating some familiar faces finding new leadership roles across campus. Marbridge has always been proud of our transparency, and we're happy to announce some familiar faces with new titles.

On March 31, Scott McAvoy moved into his new position as President/CEO. Scott has been a dedicated and forward-thinking leader who has helped Marbridge grow in his nearly 20 years at Marbridge. Scott follows James Stacey, who stepped into a President Emeritus role.

Joining the Senior Leadership Team is Marcus Mercer was promoted to Vice President of Operations from his previous role as Director of The Ranch.

"I love having the opportunity to add to the growth of Marbridge, be a voice, and see the future for the residents and team members," Marcus said. "These changes will bring a lot of excitement, opportunities of innovation, and approaches that will move us forward, not only for the team but for the residents."

Marcus has been instrumental in his time at Marbridge and will continue serving the residents and team members across campus with compassion, trust, and heart. Joining Marcus is Megan Salyer, who was promoted to Vice President of Human Resources.

Jenna Hudson, stepped into the role as Director of The Ranch and following in Marcus' shoes in delivering exceptional care to Ranch residents. Will Hoermann, will pick off where Jenna left as the Director of Admissions, and Tracy Hogan was promoted from Assistant Director to Director of The Village. Stepping into the role of Assistant Director of The Village is Shae Willingham.

Marbridge has always been proud of the fantastic leadership across our campus. These additions will continue to strengthen the mission and ensure the next 70 years of Marbridge will be the best ever.

Please join us in celebrating these amazing team members and the future of Marbridge.



Scott McAvoy
President/CEO



James Stacey
President Emeritus



Marcus Mercer
VP of Operations



Megan Salyer
VP of Human Resources



Jenna Hudson
Director of The Ranch



Will Hoermann
Director of Admissions



Tracy Hogan
Director of The Village



Shae Willingham
Assistant Director of The Village

Learn more about Marbridge's Leadership team at:

[Marbridge.org/leadership](https://marbridge.org/leadership)



Financial Position

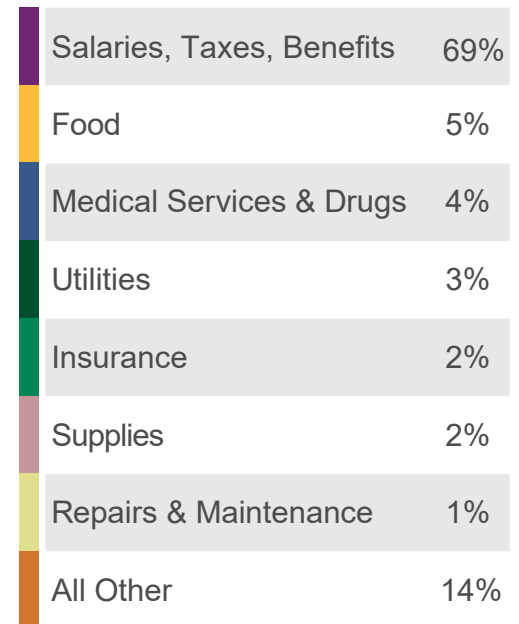
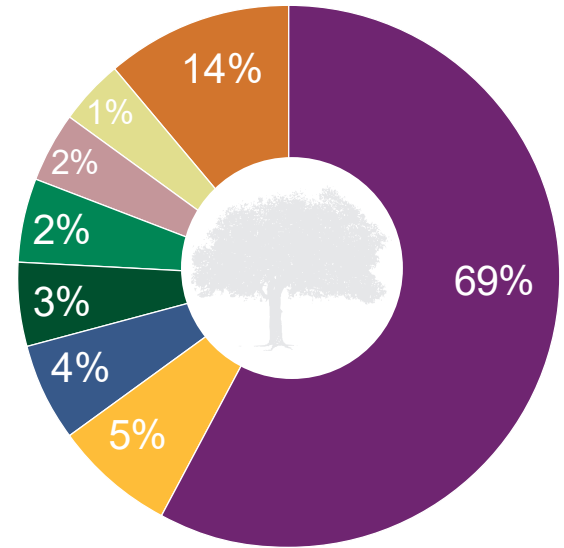
Statement of Financial Position Fiscal Year 2022*

Assets	FY 2021	FY 2022
Current Assets	\$ 4,146,000	\$ 7,064,000
Long-Term Investments	\$ 9,363,000	\$ 8,191,000
Property & Equipment	\$ 17,143,000	\$ 17,744,000
Other Assets	\$ 2,833,000	\$ 3,872,000
Total Assets	\$ 33,485,000	\$ 36,871,000
Liabilities		
Current Liabilities	\$ 2,158,000	\$ 1,900,000
Deferred Income - Lifetime Care	\$ 39,000	\$ 38,000
Long-Term Debt	\$ 331,000	\$ 831,000
Total Liabilities	\$ 2,528,000	\$ 2,769,000
Net Assets		
Without Donor Restrictions	\$ 23,410,000	\$ 23,691,000
With Donor Restrictions	\$ 7,547,000	\$ 10,411,000
Total Net Assets	\$ 30,957,000	\$ 34,102,000
Total Liabilities and Net Assets	\$ 33,484,000	\$ 36,871,000

Statement of Activities and Changes in Net Assets

Sources of Revenue		
Tuition & Fees	\$ 13,156,000	\$ 14,054,000
Contributions	\$ 4,061,000	\$ 7,431,000
Other	\$ 4,695,000	\$ 249,000
Total Income	\$ 21,912,000	\$ 21,236,000
Expenses		
Program Services	\$ 14,630,000	\$ 14,948,000
Management & General	\$ 2,213,000	\$ 2,351,000
Fund Raising	\$ 712,000	\$ 793,000
Total Expenses	\$ 16,338,020	\$ 18,092,000
Change in Net Assets	\$ 4,358,000	\$ 3,145,000

Major Operational Expenses Fiscal Year 2022*

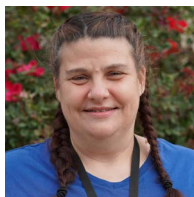


*Fiscal year July 1, 2021 - June 30, 2022

Premier Employees

The Marbridge Premier Employee Program has recognized over 315 employees whose excellent work ethic and positive personal character traits make them shining examples of Marbridge staff. Employees are nominated by their supervisors and receive a certificate of commendation and time-off pass redeemable for eight hours of paid time off.

“We are extremely proud of our Premier Employees and commend them once again for the invaluable contributions they make to the lives of our residents,” said Scott McAvoy, President/CEO.



Jeanette “Mimi” DeLeon
Resident Trainer, The Village

Humorous // Enthusiastic // Supportive

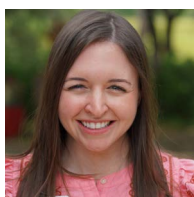
Mimi is a wonderful employee. She always goes above and beyond in every aspect of her job. The residents, families, and her team members absolutely enjoy Mimi’s positive and enthusiastic attitude. She’s an extremely hard worker and we appreciate all she does.



Kim Kalny
Speech Language Pathologist, The Villa

Empathetic // Hard-working // Committed

Kim is incredibly empathetic and dedicated to the well-being of Marbridge’s residents. She creates a positive work environment and sets a high standard for patient care. The residents benefit from her expertise and compassionate approach, leading to improve skills and an enhanced quality of life.



Nicole Klein
Rehab Manager, The Villa

Hard-working // Responsible // Organized

Nicole is an incredibly hard worker, smart, and consistent. She brings great knowledge to projects and gives staff a better understanding of issues that could arise. She’s a great leader for her team and assists them without claiming to hold their knowledge.



Isabel Ojeda
Human Resources Assistant, Administration

Diligent // Dependable // Determined

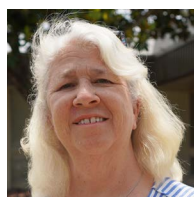
Isabel is an exceptionally hard worker, determined, and always assists others to learn and grow in their field. She displays great determination daily in seeking additional tasks, seeking guidance, and always willing to go above and beyond to assist any employee in need.



Helen Partida
Administrative Assistant, The Ranch

Supportive // Initiative // Organized

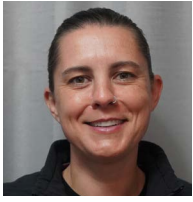
Helen always stays one step ahead of management in getting the needed things done for both Ranch residents and employees. She takes care of tasks in record time without error and has formed wonderful relationships with residents where they seek out her guidance. She takes the initiative and makes excellent suggestions in making things easier.



Dorey Petty
Development Coordinator, Development

Selfless // Resourceful // Knowledgeable

From the moment Dorey arrives on campus each day, her mind is already thinking about how she can enhance the lives of employees and residents through innovative and thoughtful ways. Dorey arrived at Marbridge with an arsenal of resources, but it never gets in the way of her ethically raising donations or her creativity.



JR Romeyn
Nurse Manager/Care Coordination, The Villa

Responsible // Adaptable // Dependable

The difference Romeyn has made to staffing and education for our employees has been remarkable. Her position is one that can be incredibly time consuming and tedious. She displays amazing patience and flexibility in her role.



Brian Steves
Resident Trainer, The Ranch

Reliable // Dedicated // Patient

Brian is one of the most dedicated and reliable employees at The Ranch. He comes to work daily knowing his patience will be one of his best assets when working through difficult situations and takes on more responsibility than he's asked. He enjoys his time with residents and expresses how much joy they give him.



Brook Lyn Styes
Driver, The Villa

Helpful // Dedicated // Kind

Brook Lyn is incredibly helpful in setting up and maintaining appointments for residents and coordinating with staff and families. She is kind and always willing to be helpful in any way possible.



Liani Torres
Office Assistant, The Village

Humorous // Organized // Empathetic

Liani's humorous personality not only eases anxiety and tension, but also provides a fun and spirited workspace. She's every well organized, empathetic, helpful, and is loved by all the residents and staff.



Kimber Van Beck
MDS Coordinator, The Villa

Compassionate // Helpful // Versatile

Since moving into her role as MDS Coordinator, Kimber has become an expert in her role. She's incredibly helpful and her skills in assessment are very important in ensuring a great level of care at The Villa.



L. Jon Vasquez
Landscaping Supervisor, Facilities

Cheerful // Energetic // Dedicated

Jon is dedicated, cheerful, and helpful when working with residents, employees, and volunteers. He maintains a high level of energy when working on projects or planning for the future.



Chelsea Vaughan
Director of Nursing

Supportive // Dependable // Dedicated

Chelsea has led her team through many changes and has been incredibly supportive since her promotion. She is an excellent advocate for our residents and her team, and can be counted on to always have the best interest of Marbridge in the front of her thinking.

Learn how you can join the Marbridge team at:
[Marbridge.org/careers](https://marbridge.org/careers)



Marbridge Foundation

P.O. Box 2250 • Manchaca, TX 78652
512.282.1144 • info@marbridge.org
Marbridge.org

Marbridge is a non-profit residential community that offers transitional and lifetime care to adults with a wide range of cognitive abilities and — through compassion and faith — provides them opportunities to learn, experience, and achieve a whole new life.



RETURN SERVICE REQUESTED

Non-Profit Organization
US Postage Paid
Austin, Texas
Permit No. 2900



Planned Giving

While our mission at Marbridge remains to provide a caring home for individuals with intellectual and developmental disabilities, an equally important part of our commitment is to provide comfort and security for families of our residents in knowing that their loved-one can remain in a safe and loving environment, long after they are gone.

There are many opportunities for planned giving to ensure Marbridge's mission can grow for years to come.

For more information on planned giving options, contact Becca McPherson, VP of Development, at bmcpherson@marbridge.org.

Upcoming Dates

Last Day of Summer Session	August 18
Summer Break	August 19 - September 4
First Day of Fall Classes	September 5
NFL Super Bowl Raffle Party	December 7
Marbridge Christmas Program	December 15